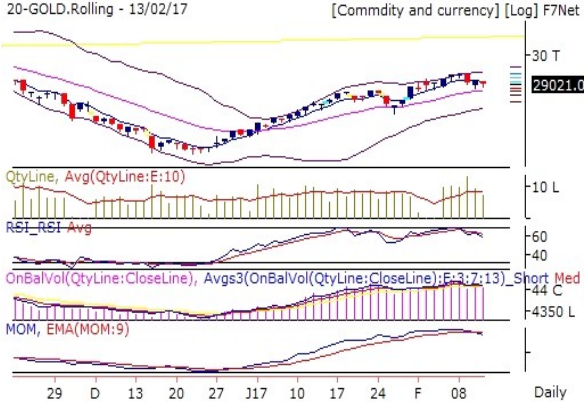


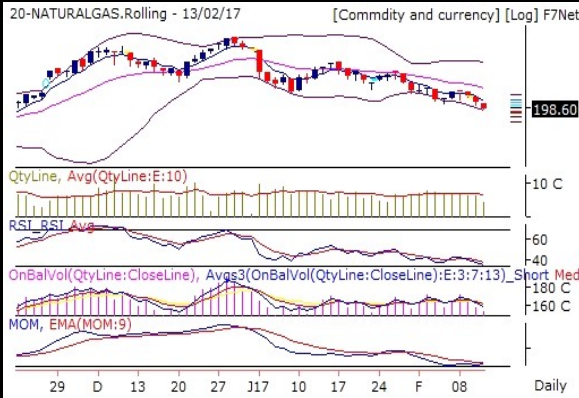


Commodities Outlook

Date-14-02-2017

Recommendations	Expected Time frame for all recommendations is intraday.
<ol style="list-style-type: none"> 1 BUY ALUMINIUM Future ABOVE 126.1 Stop 125 T1 127.50 2 BUY COPPER Future ABOVE 415 Stop 412 T1 420 T2 422 3 SELL GOLD Future Below 28912 Stop 29071 T1 28718 T2 28593 4 BUY LEAD Future ABOVE 165.2 Stop 164 T1 168 T2 171 5 SELL NATURALGAS Future Below 198 Stop 200 T1 195 T2 191 	
<p>GOLD</p>  <p>20-GOLD.Rolling - 13/02/17 [Commdity and currency] [Log] F7Net</p> <p>QtyLine, Avg(QtyLine:E:10)</p> <p>RSI_RSI Avg</p> <p>OnBalVol(QtyLine:CloseLine), Avgs3(OnBalVol(QtyLine:CloseLine):E:3:7:13)</p> <p>MOM, EMA(MOM:9)</p> <p>Daily</p>	<p>On Balance Volume indicator is showing that bear are continuously selling GOLD. RSI is losing strength currently at 58.39. Which is below 9DEMA. Momentum indicator is showing negative momentum build up. Which is below 9DEMA. Bollinger Band(BB) has started contracting. It is indicating decrease in the volatility in the direction of current trend and probable reversal in current trend.</p> <p>GOLD is maintaining Bearish trend. It is advisable to hold short position if any.</p>
<p>SILVER 42422 (-0.41 %)</p>  <p>20-SILVER.Rolling - 13/02/17 [Commdity and currency] [Log] F7Net</p> <p>QtyLine, Avg(QtyLine:E:10)</p> <p>RSI_RSI Avg</p> <p>OnBalVol(QtyLine:CloseLine), Avgs3(OnBalVol(QtyLine:CloseLine):E:3:7:13)</p> <p>MOM, EMA(MOM:9)</p> <p>Daily</p>	<p>On Balance Volume indicator is showing that bear are continuously selling SILVER. RSI is losing strength currently at 61.04. Which is below 9DEMA. Bollinger Band(BB) has started contracting. It is indicating decrease in the volatility in the direction of current trend and probable reversal in current trend.</p> <p>SILVER is in consolidation zone. Further weakness price and indicator value will lead to deeper correction and vice versa.</p>
<p>CRUDEOIL 3545 (-1.81 %)</p>  <p>20-CRUDEOIL.Rolling - 13/02/17 [Commdity and currency] [Log] F7Net</p> <p>QtyLine, Avg(QtyLine:E:10)</p> <p>RSI_RSI Avg</p> <p>OnBalVol(QtyLine:CloseLine), Avgs3(OnBalVol(QtyLine:CloseLine):E:3:7:13)</p> <p>MOM, EMA(MOM:9)</p> <p>Daily</p>	<p>On Balance Volume indicator is showing that Bears has started selling CRUDEOIL. RSI is losing strength currently at 47.5. Which is below 9DEMA. Momentum Indicator is showing negative momentum in coming few trading session. Which is below 9DEMA. Bollinger Band(BB) has started expanding. It is indicating increase in the volatility in the direction of current trend.</p> <p>CRUDEOIL is maintaining Bearish trend. It is advisable to hold short position if any.</p>

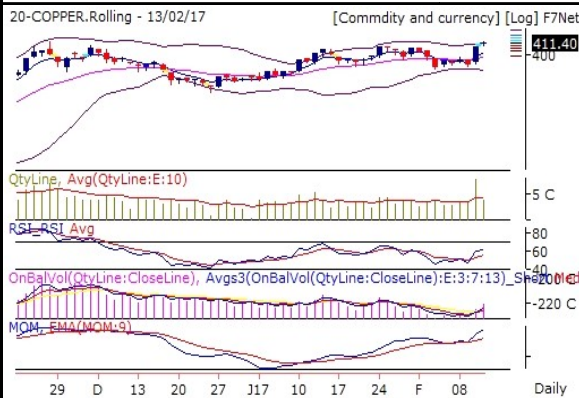
NATURALGAS 198.6 (-2.77 %)



On Balance Volume indicator is showing that bear are continuously selling NATURALGAS. RSI still in weak zone currently at 33.92. Which is below 9DEMA. Momentum Indicator is showing negative momentum in coming few trading session. Which is below 9DEMA. Bollinger Band(BB) has started expanding. It is indicating increase in the volatility in the direction of current trend.

NATURALGAS is maintaining Bearish trend. It is advisable to hold short position if any.

COPPER 411.4 (0.79 %)



On Balance Volume indicator is showing that Bulls are continuously buying COPPER. RSI holding strongly at 61.46. Which is above 9DEMA. Momentum Indicator is showing positive momentum in coming few trading session. Which is above 9DEMA. Bollinger Band(BB) has started expanding. It is indicating increase in the volatility in the direction of current trend.

COPPER is maintaining Bullish trend now. It is advisable to hold long position if any.

ALUMINIUM 125.05 (0.16 %)



Volume is above 10DMA. On Balance Volume indicator is showing that Bulls are continuously buying ALUMINIUM. RSI holding strongly at 61.97. Which is above 9DEMA. Momentum Indicator is showing positive momentum in coming few trading session. Which is above 9DEMA. Bollinger Band(BB) has started contracting. It is indicating decrease in the volatility in the direction of current trend and probable reversal in current trend.

ALUMINIUM is maintaining Bullish trend now. It is advisable to hold long position if any.

NICKEL 714.5 (0.52 %)



On Balance Volume indicator is showing that Bulls are continuously buying NICKEL. RSI holding strongly at 56.91. Which is above 9DEMA. Momentum Indicator is showing positive momentum in coming few trading session. Which is above 9DEMA. Bollinger Band(BB) has started expanding. It is indicating increase in the volatility in the direction of current trend.

NICKEL is maintaining Bullish trend now. It is advisable to hold long position if any.

LEAD 162.25 (0.59 %)



Volume is above 10DMA. On Balance Volume indicator is showing that Bulls are continuously buying LEAD. RSI holding strongly at 60.16. Which is above 9DEMA. Momentum Indicator is showing positive momentum in coming few trading session. Which is above 9DEMA. Bollinger Band(BB) has started contracting. It is indicating decrease in the volatility in the direction of current trend and probable reversal in current trend.

LEAD is maintaining Bullish trend now. It is advisable to hold long position if any.

ZINC 195.5 (-0.46 %)



Volume is above 10DMA. On Balance Volume indicator is showing that Bears has started selling ZINC. Momentum Indicator is showing positive momentum in coming few trading session. Which is above 9DEMA. Bollinger Band(BB) has continuously expanding. It is indicating increase in the volatility in the direction of current trend.

ZINC is in consolidation zone. Further weakness price and indicator value will lead to deeper correction and vice versa.

Pivot Table

Scrip name	S3	S2	S1	Pivot	R1	R2	R3
ALUMINIUM	123.2	124.3	124.7	125.3	125.7	126.4	127.4
COPPER	401.5	406.7	409.1	411.9	414.3	417.1	422.3
CRUDEOIL	3,418.0	3,491.0	3,518.0	3,564.0	3,591.0	3,637.0	3,710.0
GOLD	28,592.7	28,817.7	28,919.3	29,042.7	29,144.3	29,267.7	29,492.7
LEAD	155.2	159.1	160.7	162.9	164.5	166.8	170.6
NATURALGAS	191.2	195.5	197.0	199.8	201.3	204.1	208.4
NICKEL	698.2	707.2	710.9	716.2	719.9	725.2	734.2
SILVER	41,750.7	42,126.7	42,274.3	42,502.7	42,650.3	42,878.7	43,254.7
ZINC	189.3	192.8	194.2	196.4	197.7	199.9	203.5

Report Generated by Research Team Grovalue financial services Ltd

Mr. Vishal Wagh (Senior Research Analyst)

Mr. Atul Panpatil (Research Analyst)

****For Disclaimer please visit www.grovalue.in/discalimer/

For queries one can mail at research@grovalue.in, For contact 022-62166666